

Divine guidance

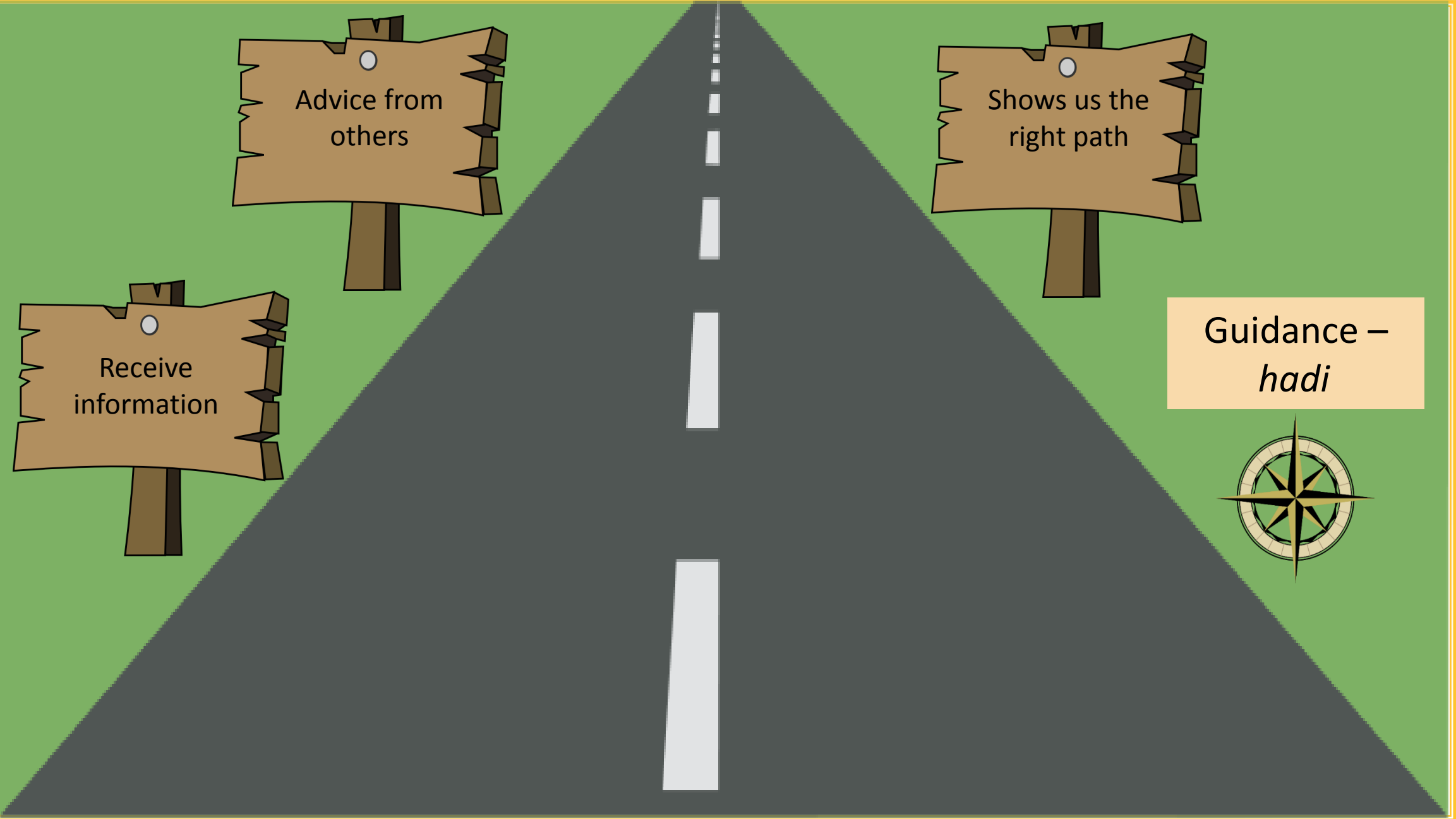
Module 2 Band C, lesson 2

Advice from
others

Shows us the
right path

Receive
information

Guidance –
hadi



هادي Al Hadi

- The one Who guides His servants to the right path



- Divine guidance - received from *Allah*



- Divine guidance is for all of *Allah's* creation and not just mankind.



Allah guided
the bees to
make hives,
build
honeycombs in
hexagonal
shapes +
showed them
how to make
honey



<http://islamgreatreligion.wordpress.com>

And your Lord inspired the bee that makes houses in the hills
and in the trees and in the roofs. Then eat of every kind of fruit,
and walk the ways of your Lord that is smooth and easy for you.

There comes out from
their bellies a drink of varied
colors in which there is healing
for the people Undoubtedly in it
there is sign for those who ponder.

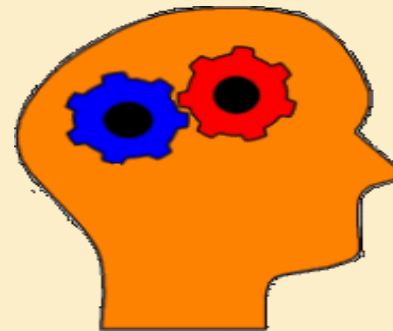
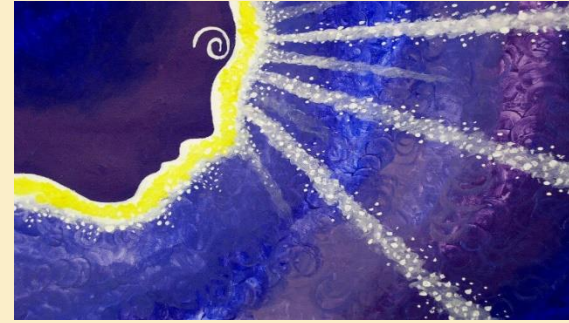
Surah An-Nahl, Ayah 68-69
(The Holy Quran)

How does *Allah* guide us

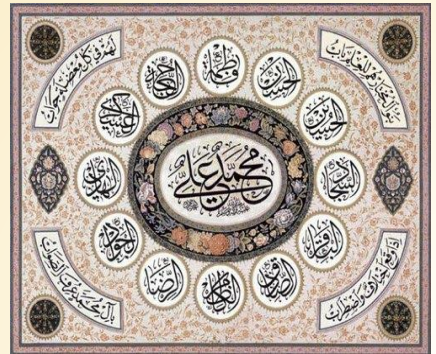
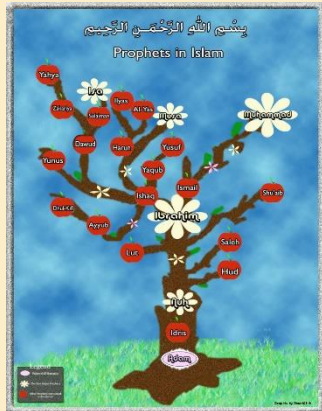
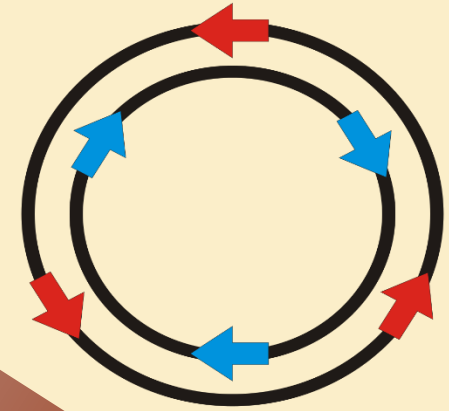
- *Allah* guides us at all times



- *Allah* has blessed us with inner guidance



- Allah has also granted outer guidance



Ambiya:

- Our role models



- Chosen by *Allah* to guide us



- Through them, we learn about *Allah*



- They are sinless



- They receive communication from *Allah*



Aimmahs

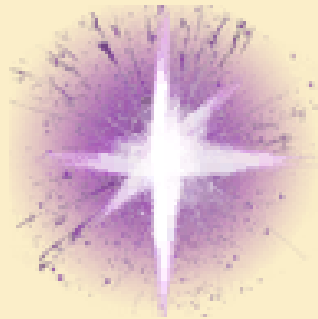
- They are sinless too



- They help us to understand the laws of *Allah* and the Holy *Qur'an*.



- They have pure souls



Hadith thaqalayn - The tradition of the two weighty things



الصراط المستقي



the straight path